

# Tamworth Public School

## Welcome



Tamworth Public School upgrade

## Welcome to your school

We're excited your new school facilities are ready for you to use. The upgrade to your school includes:



7 new flexible learning spaces



A new hall



Upgraded staff facilities

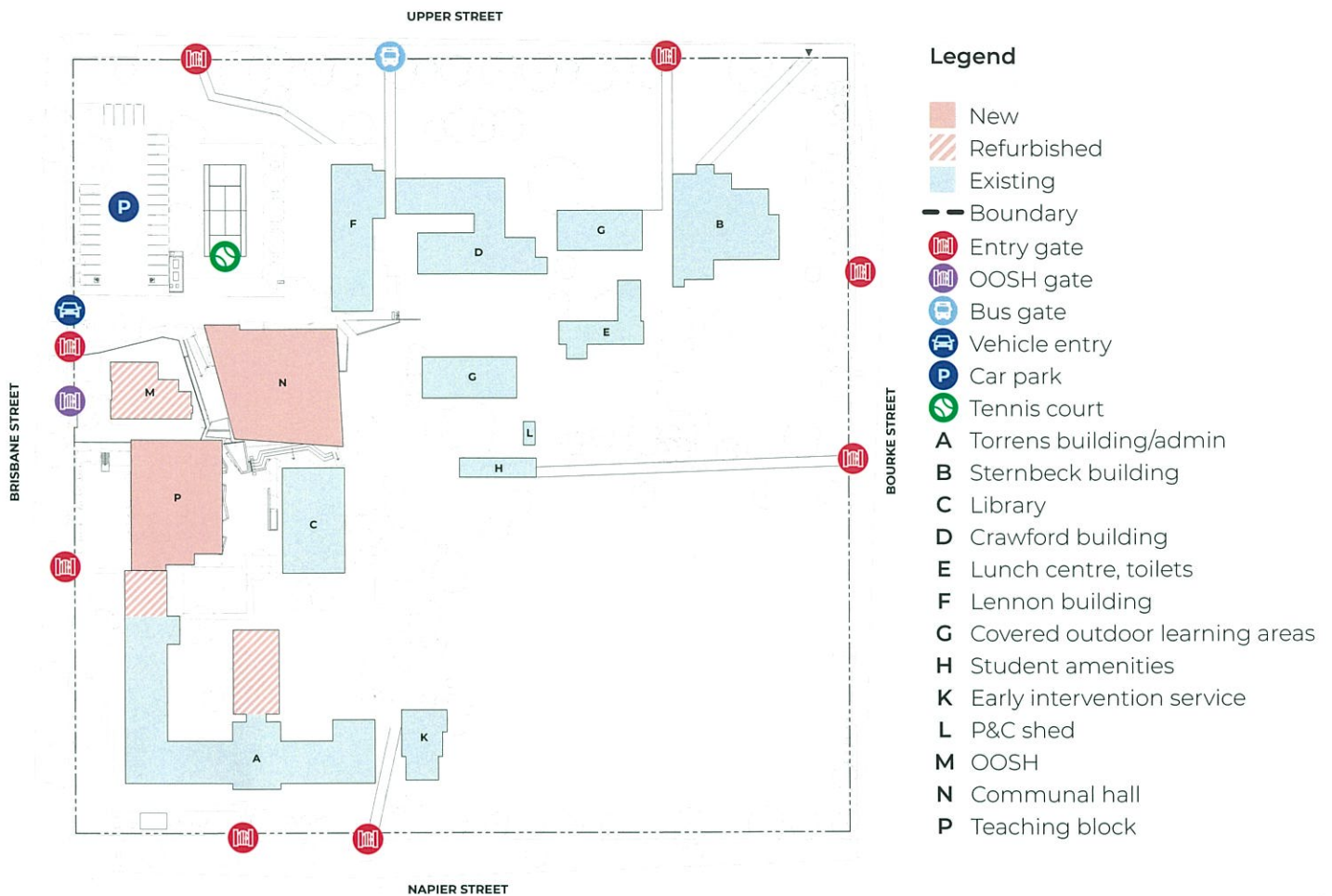


3 practical activities areas



Refurbishment of the former teacher's cottage (Block M) heritage building

Thank you for your patience during construction. We are thrilled to deliver this project for your school community and hope you enjoy your new spaces.



## Message from your Principal

On behalf of the school, I would like to welcome the community, parents, staff and students to our new facilities at Tamworth Public School.

Education today has a different focus and flavour but the essentials of literacy and numeracy will always remain paramount. These new innovative and flexible learning spaces are designed to facilitate co-teaching and individualised learning, meeting the challenges of today and the future learning needs of generations to come.

Our new communal hall will bring the school and our community closer together, giving us a wonderful resource able to be used for assemblies, concerts and special events.

I want to thank all those involved in the planning and building of these new facilities, especially the parents and teachers who provided guidance and feedback.

I am sure the community will be as excited to see the new spaces as our students and teachers will be to learn in new and collaborative ways.

**Christopher Connor**  
Principal

# New innovative learning environments

---

The Tamworth Public School upgrade is now ready for use. This exciting project has delivered innovative learning environments for the next generation of young minds.

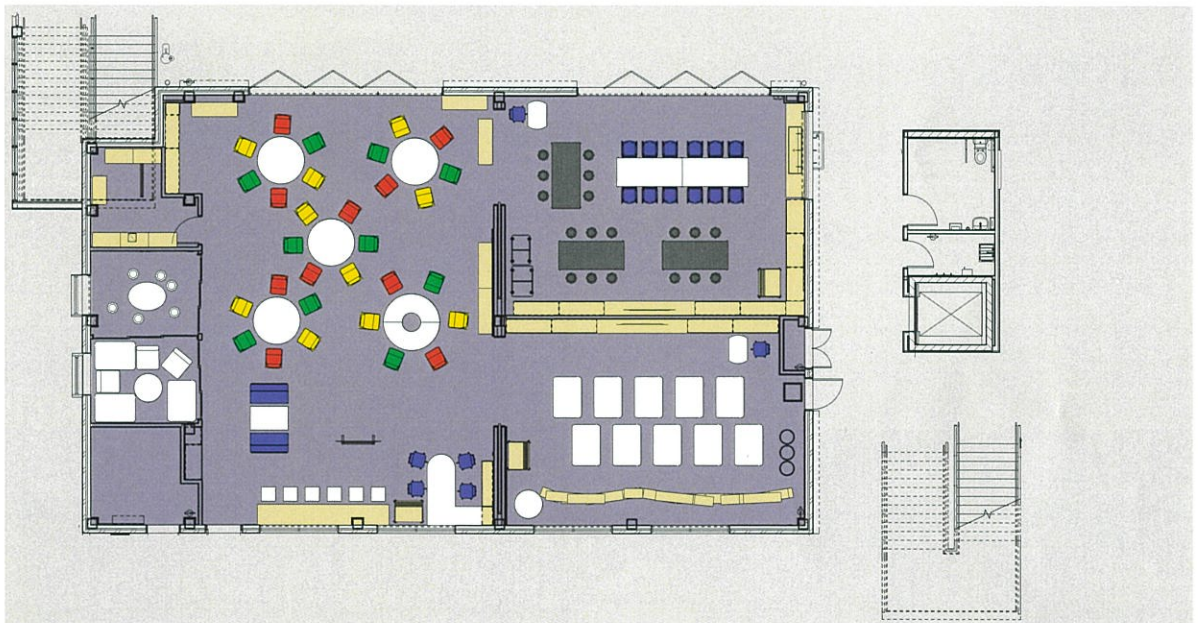
Innovative learning environments offer flexibility where teachers can provide opportunities for student engagement. The learning spaces:

- are adaptable to accommodate small or large groups
- include learning centres with flexible spaces that allow students to use technology in a variety of settings
- provide opportunities to enhance skills in collaboration, communication, critical thinking, problem solving and creativity.

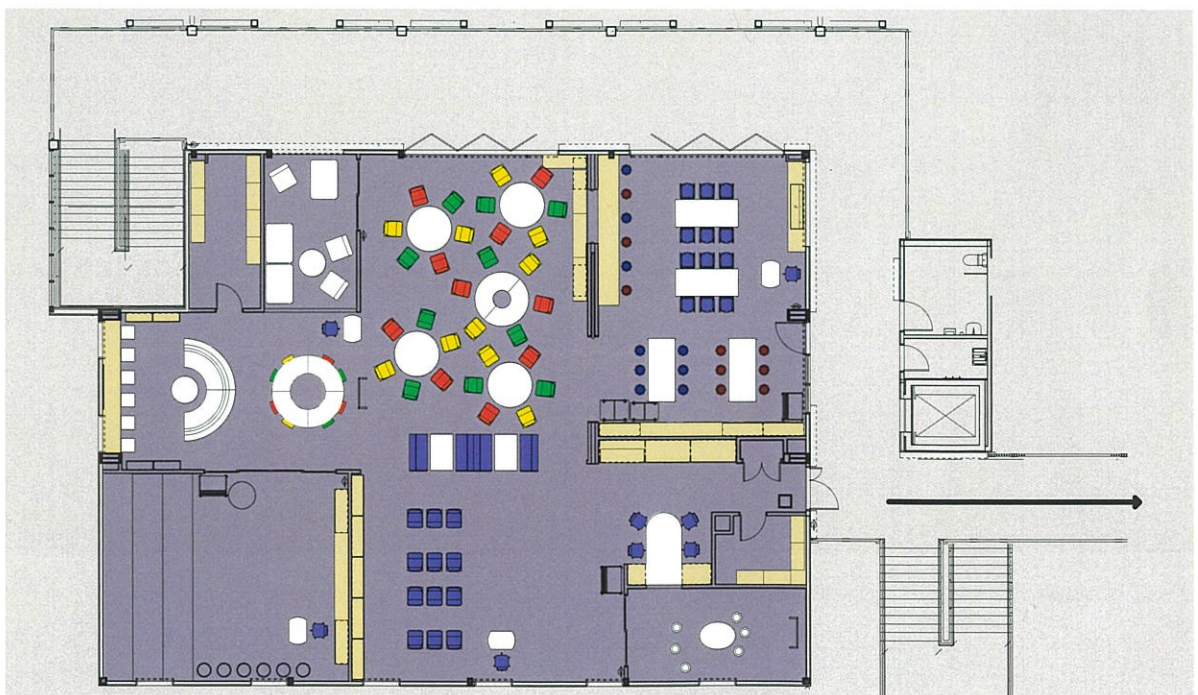
## New teaching Block P

---

Level 1



Level 2





## Frequently asked questions

---

### Which classes are being relocated?

Year 5 and 6 classes will start to use the new learning spaces in Term 4, although not all classes will be based there daily. Starting in 2021, some Year 5 and 6 classes will be permanently based in the new teaching block and some in the existing refurbished block, both making use of the new facilities regularly. Year 4 classes will be based in the Torrens Building from the beginning of 2021. All students will have an opportunity to use the new practical activity areas and presentation rooms.

### Will there be any changes to the school entrances?

From early Term 4, a new pedestrian gate on Brisbane Street, between the staff car park driveway and OOSH building, will be open for use. The ANZAC Park gate will be reopened for use. All other school entry points will remain the same.

### Will there be any changes to parking, staff parking or the bus stop?

No. These will continue to operate as usual. The bus drop-off zone remains on Upper Street. There is a new gate to close pedestrian access from the staff car park to the back of the new hall for safety purposes. Please see school map for pedestrian gates.

### Will there be any changes to the Out of School Hours Care?

There are no changes to the Out of School Hours Care, which has been operating in the refurbished former teacher's cottage heritage building since June 2020.

### What will we use the new hall for?

Our new communal hall will be available for all classes and stages to use on a regular basis for assemblies, concerts and special events.

### When will demountables be removed?

The demountable classrooms next to the tennis courts will be removed from the site following the relocation of Year 4 students at the end of Term 4. These works will not impact access to the school or day-to-day operations. More information on the removal will be provided closer to works happening.

### When will parents be able to view the new facilities?

We are aware that parents and carers would like a tour of the new facilities. While we are unable to run physical tours of the site due to the health restrictions in place, we look forward to welcoming our school community to view our new school as soon as we can.

### For more information contact:

School Infrastructure NSW  
Email: [schoolinfrastructure@det.nsw.edu.au](mailto:schoolinfrastructure@det.nsw.edu.au)  
Phone: 1300 482 651  
[www.schoolinfrastructure.nsw.gov.au](http://www.schoolinfrastructure.nsw.gov.au)

### For information about school activities and operations, contact the school directly:

Principal: Chris Connor  
Email: [tamworth-p.school@det.nsw.edu.au](mailto:tamworth-p.school@det.nsw.edu.au)  
Phone: 02 6766 2016  
Website: [tamworth-p.schools.nsw.gov.au](http://tamworth-p.schools.nsw.gov.au)